

STATE OF WISCONSIN OUTAGAMIE COUNTY HIGHWAY DEPARTMENT

PLAN OF PROPOSED IMPROVEMENT

C.T.H. "Y" - C.T.H. "U"

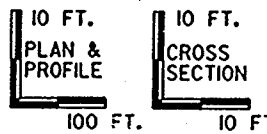
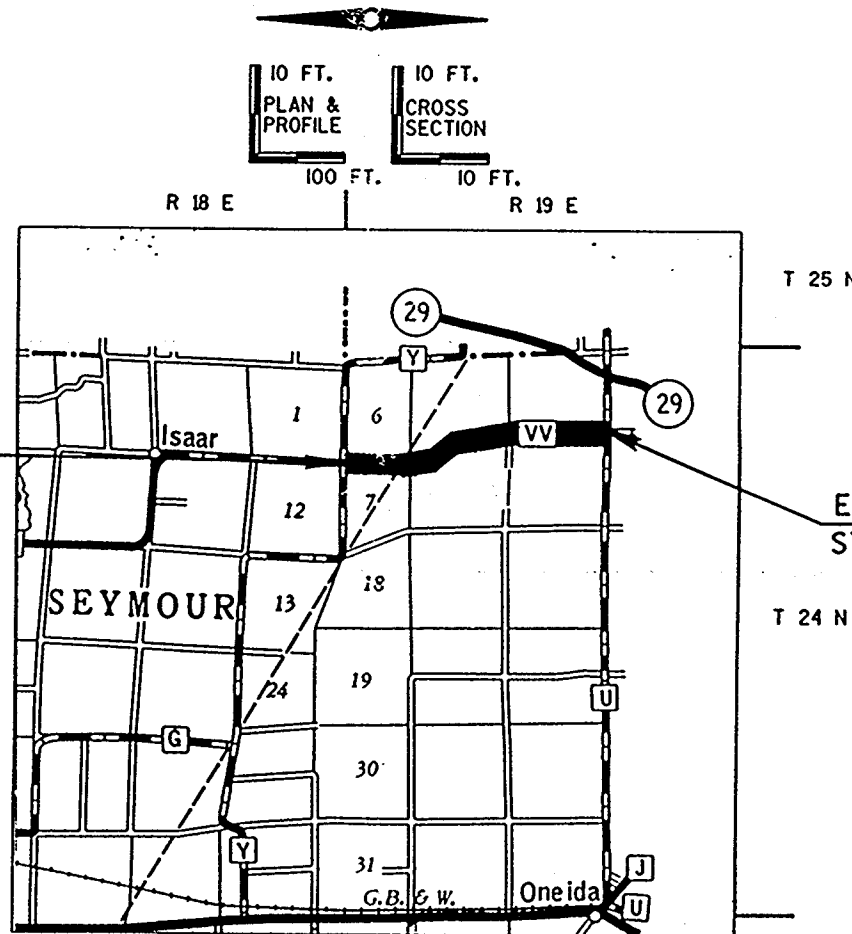
C.T.H. "VV"
OUTAGAMIE COUNTY



LEVELS ON = 1, 2, 3, 4, 5, 6, 7, 8, 9, 10, 11, 12, 13, 14, 15, 16, 17, 18, 19, 20, 21, 22, 23, 24, 25, 26, 27, 28, 29, 30, 31, 32, 33, 34, 35, 36, 37, 38, 39, 40, 41, 42, 43, 44, 45, 46, 47, 48, 49, 50, 51, 52, 53, 54, 55, 56, 57, 58, 59, 60, 61, 62

BEGIN PROJECT
STA. 10+50.00

END PROJECT
STA. 155+50.00

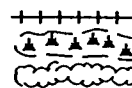
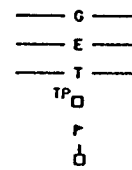


CONVENTIONAL SIGNS

- COUNTY LINE
- CORPORATE LIMITS
- PROPERTY LINE
- LOT LINE
- LIMITED HIGHWAY EASEMENT
- EXISTING RIGHT OF WAY
- NEW RIGHT OF WAY
- REFERENCE LINE
- SLOPE INTERCEPT
- ORIGINAL GROUND
- MARSH OR ROCK PROFILE
- CULVERT IN PLACE
- CULVERT REQUIRED
- CULVERT REQUIRED (Profile)



- COMBUSTIBLE FLUIDS (UNDER PRESSURE)
- UNDERGROUND UTILITIES
- GAS
- ELECTRIC
- TELEPHONE
- SERVICE PEDESTAL
- CABLE MARKER
- POWER POLE
- TELEPHONE POLE
- RAILROADS
- MARSH
- WOODED AREA



LAYOUT
SCALE 0 1 MI.

TOTAL NET LENGTH OF CENTERLINE = 2.746 MI. RURAL

APPROVED
FOR
OUTAGAMIE COUNTY

11/2/91 *Michael...*
DATE COUNTY HIGHWAY COMMISSIONER

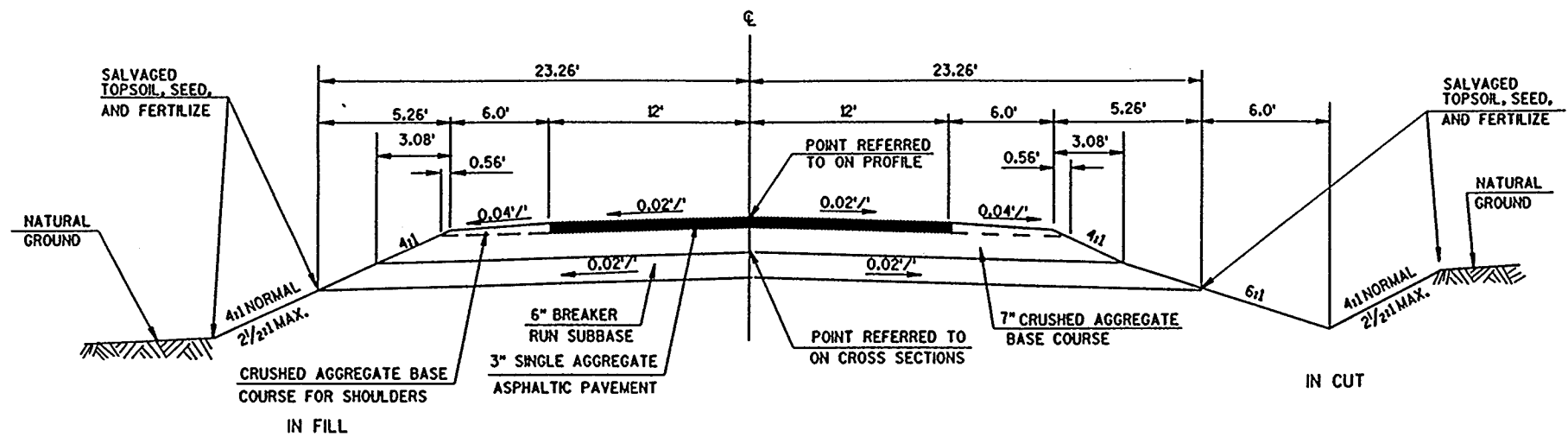
PLAN PREPARED
BY
AYRES ASSOCIATES
CONSULTING ENGINEERS
GREEN BAY, WISCONSIN

VV-3

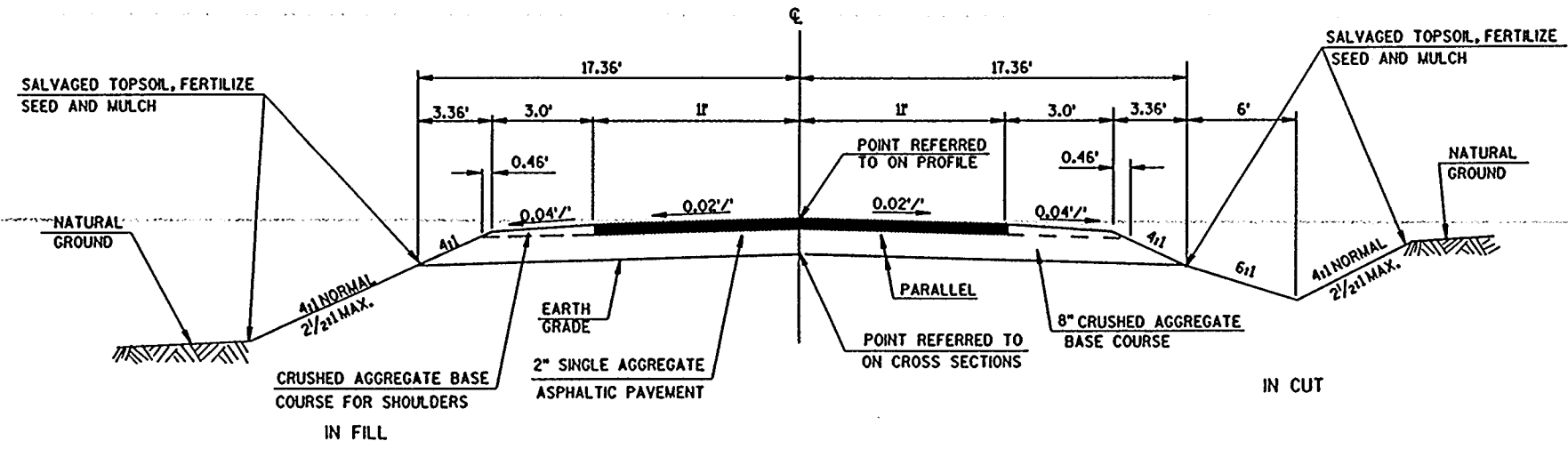
VV-3

VV-3

VV-3



TYPICAL FINISHED SECTION FOR C.T.H. "VV"



TYPICAL FINISHED SECTION SIDE ROADS

GENERAL NOTES

ALL DISTANCES ARE GROUND DISTANCE.
 ALL BEARINGS ARE TRUE BEARINGS.
 ALL TIES ON THIS PLAN ARE HORIZONTAL UNLESS DESCRIBED OTHERWISE.
 THE LOCATION OF EXISTING AND PROPOSED UTILITIES AS SHOWN ON THE PLANS ARE APPROXIMATE. THERE MAY BE OTHER UTILITIES INSTALLATION WITHIN THE PROJECT WHICH ARE NOT SHOWN.

UTILITIES

WISCONSIN ELECTRIC POWER COMPANY TELEPHONE 1-414-735-0705
 807 SOUTH ONEIDA STREET
 P.O. BOX 1699
 APPLETON, WISCONSIN 54913
 ATTENTION: NORBERT P. SCHEM

WISCONSIN PUBLIC SERVICE CORPORATION - ELECTRIC TELEPHONE 1-414-433-1388
 P.O. BOX 19002
 GREEN BAY, WISCONSIN 54307-9002
 ATTENTION: MR. R.C. BUTTKE
 DIGGERS HOTLINE

ANR PIPELINE COMPANY TELEPHONE 1-414-822-3201
 P.O. BOX 398
 BONDUCL, WISCONSIN 54107
 ATTENTION: MR. ROBERT CATHEY
 DIGGERS HOTLINE

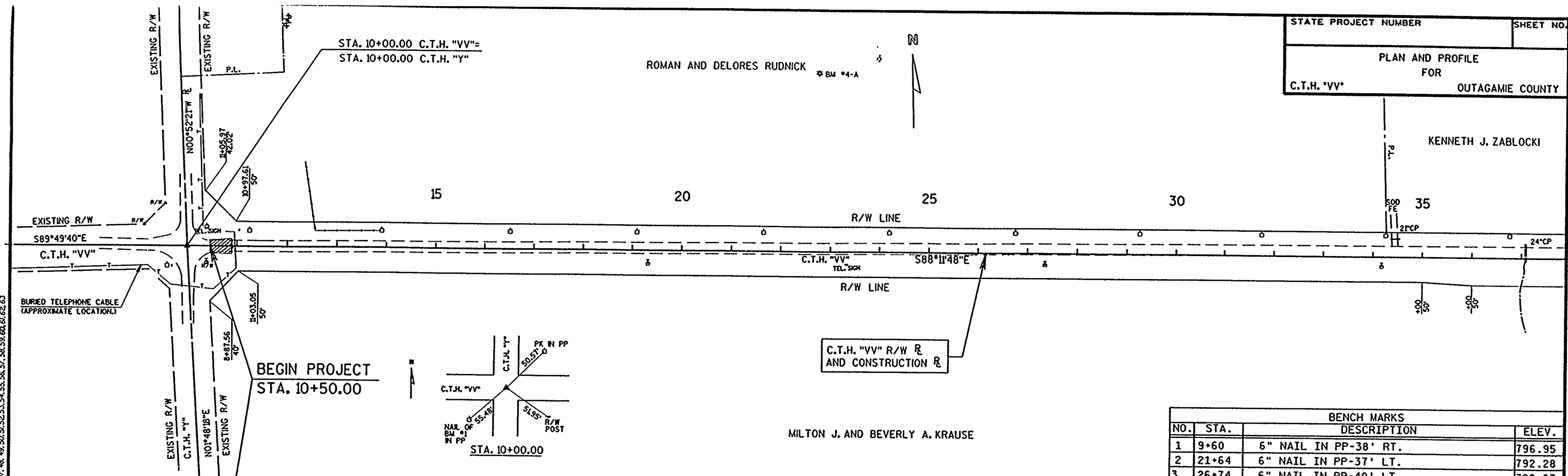
NORTHEAST TELEPHONE COMPANY TELEPHONE 1-414-822-3201
 122 SOUTH St. AUGUSTINE STREET
 PULASKI, WISCONSIN 54162
 ATTENTION: MR. ALAN KABARA

LEVELS ON - 1, 2, 3, 4, 5, 6, 7, 8, 9, 10, 11, 12, 13, 14, 15, 16, 17, 18, 19, 20, 21, 22, 23, 24, 25, 26, 27, 28, 29, 30, 31, 32, 33, 34, 35, 36, 37, 38, 39, 40, 41, 42, 43, 44, 45, 46, 47, 48, 49, 50, 51, 52, 53, 54, 55, 56, 57, 58, 59, 60, 61, 62

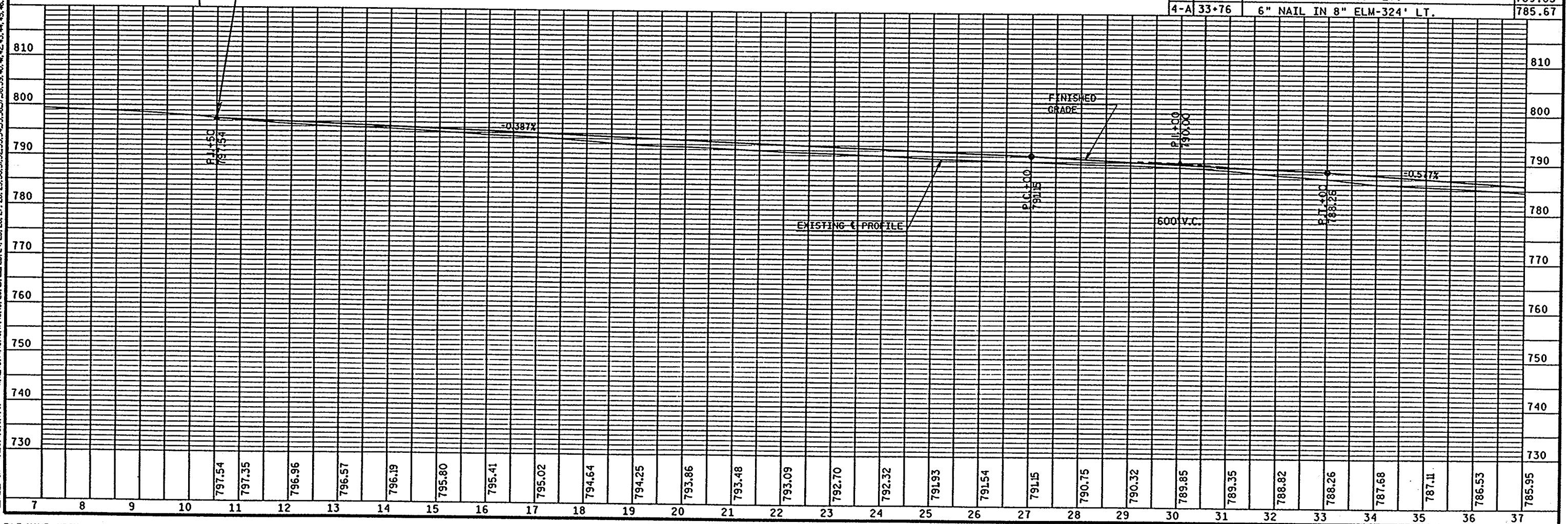
KENNETH J. ZABLOCKI

ROMAN AND DELORES RUDNICK
 BM *4-A

MILTON J. AND BEVERLY A. KRAUSE



BENCH MARKS			
NO.	STA.	DESCRIPTION	ELEV.
1	9+60	6" NAIL IN PP-38' RT.	796.95
2	21+64	6" NAIL IN PP-37' LT.	792.28
3	26+74	6" NAIL IN PP-40' LT.	789.83
4-A	33+76	6" NAIL IN 8" ELM-324' LT.	785.67



LEVELS ON = 1, 2, 3, 4, 5, 6, 7, 8, 11, 12, 13, 14, 15, 16, 17, 18, 19, 20, 21, 22, 23, 24, 25, 26, 27, 28, 29, 30, 31, 32, 33, 34, 35, 36, 37, 38, 39, 40, 41, 42, 43, 44, 45, 46, 47, 48, 49, 50, 51, 52, 53, 54, 55, 56, 57, 58, 59, 60, 61, 62, 63

PLAN AND PROFILE FOR OUTAGAMIE COUNTY

C.T.H. "VV"

GEORGE M. CISLER ET.AL.

EMILY A. SHMIT-(FEE)
SUSAN M. VANDER STEEN-(L.C.)

BENCH MARKS			
NO.	STA.	DESCRIPTION	ELEV.
5	38+74	6" NAIL IN PP-45' LT.	783.71
6	42+37	S.E. COR. CONC. PORCH-106' LT.	784.66
7	51+50	N.W. COR. CONC. RET. WALL-135' RT.	778.62
8	58+75	6" NAIL IN PP-57' RT.	772.76
9	66+81	S.E. COR. CONC. PORCH-135'-LT.	774.02

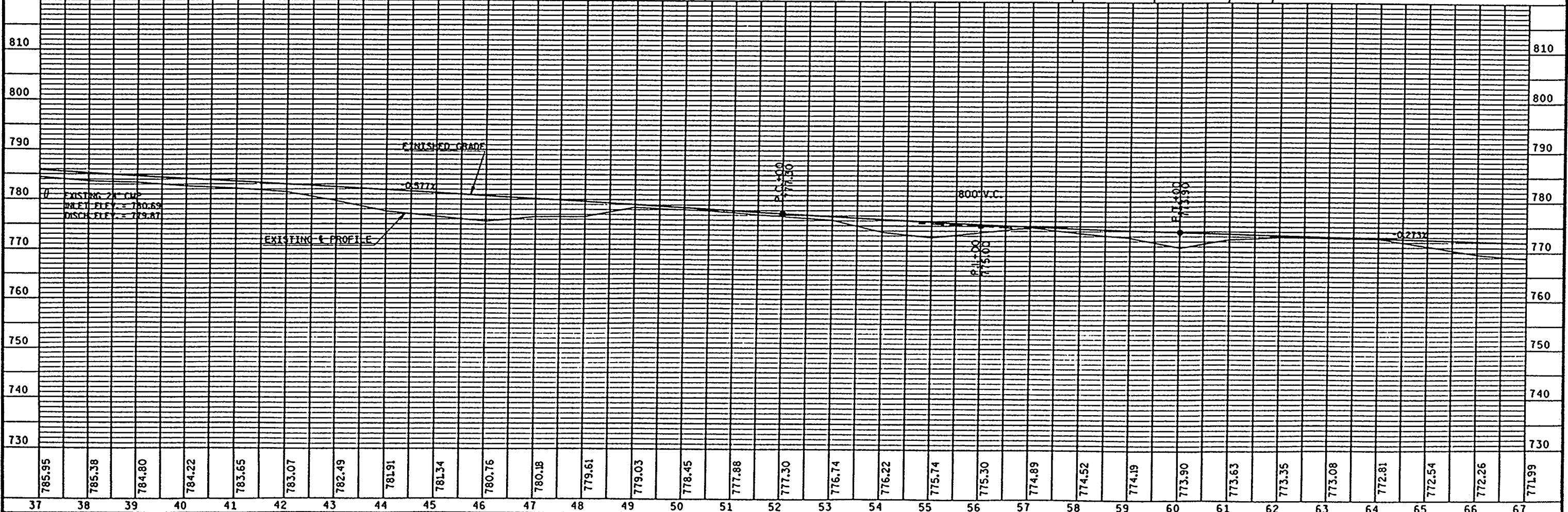
CURVE DATA

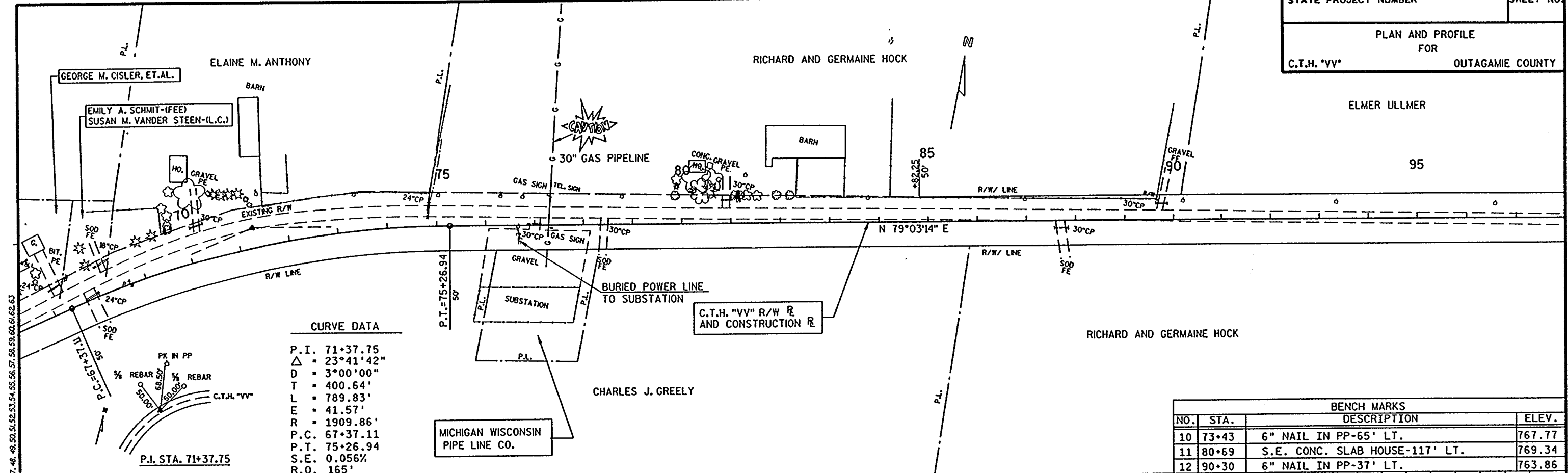
P.I. 58+79.16
 Δ = 23°46'31"
 D = 3°00'00"
 T = 402.04'
 L = 792.51'
 E = 41.86'
 R = 1909.86'
 P.C. 54+77.12
 P.T. 62+69.63
 S.E. 0.056%
 R.O. 165'

CURVE DATA

P.I. 43+64.56
 Δ = 12°40'08"
 D = 2°00'00"
 T = 318.02'
 L = 633.44'
 E = 17.60'
 R = 2864.79'
 P.C. 40+46.54
 P.T. 46+79.98
 S.E. 0.045%
 R.O. 165'

LEVELS ON + 1.2.3.4.5.6.7.8.9. 11.12.13.14.15.16.17.18.19.20.21.22.23.24.25.26.27.28.29.30.31.32.33.34.35.36.37.38.39.40.41.42.43.44.45.46.47.48.49.50.51.52.53.54.55.56.57.58.59.60.61.62.63





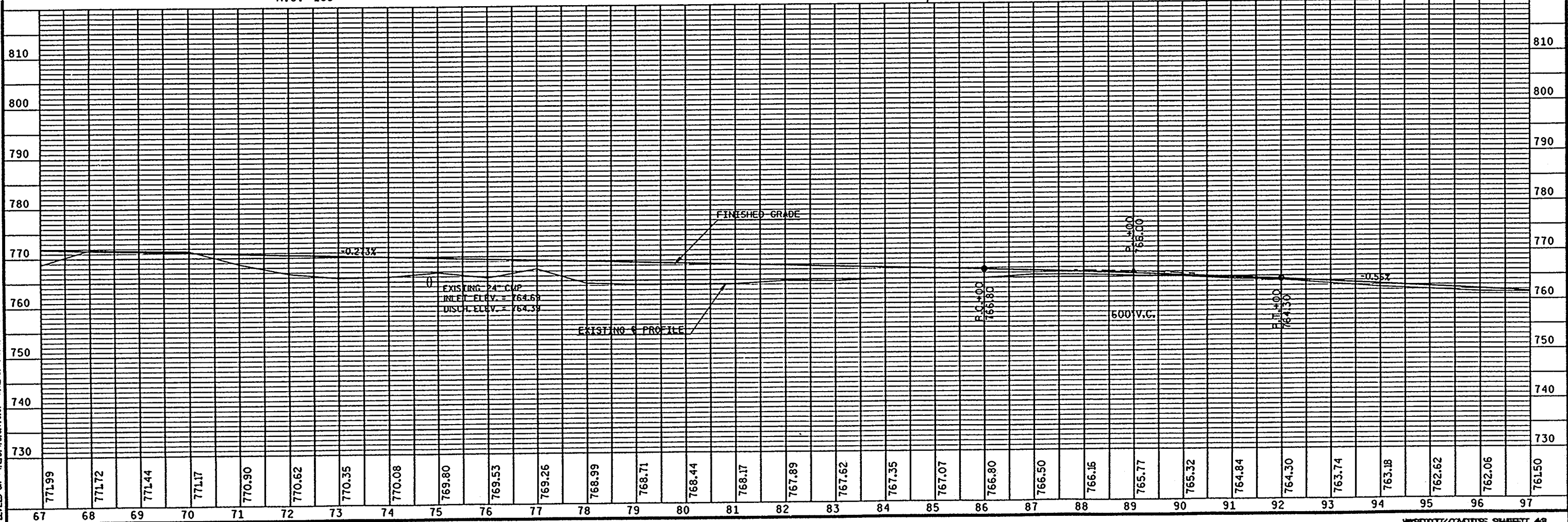
CURVE DATA

P.I. 71+37.75
 $\Delta = 23^{\circ}41'42''$
 D = 3^{\circ}00'00"
 T = 400.64'
 L = 789.83'
 E = 41.57'
 R = 1909.86'
 P.C. 67+37.11
 P.T. 75+26.94
 S.E. 0.056%
 R.O. 165'

BENCH MARKS

NO.	STA.	DESCRIPTION	ELEV.
10	73+43	6" NAIL IN PP-65' LT.	767.77
11	80+69	S.E. CONC. SLAB HOUSE-117' LT.	769.34
12	90+30	6" NAIL IN PP-37' LT.	763.86

LEVELS ON = 1, 2, 3, 4, 5, 6, 7, 8, 9, 11, 12, 13, 14, 15, 16, 17, 18, 19, 20, 21, 22, 23, 24, 25, 26, 27, 28, 29, 30, 31, 32, 33, 34, 35, 36, 37, 38, 39, 40, 41, 42, 43, 44, 45, 46, 47, 48, 49, 50, 51, 52, 53, 54, 55, 56, 57, 58, 59, 60, 61, 62, 63

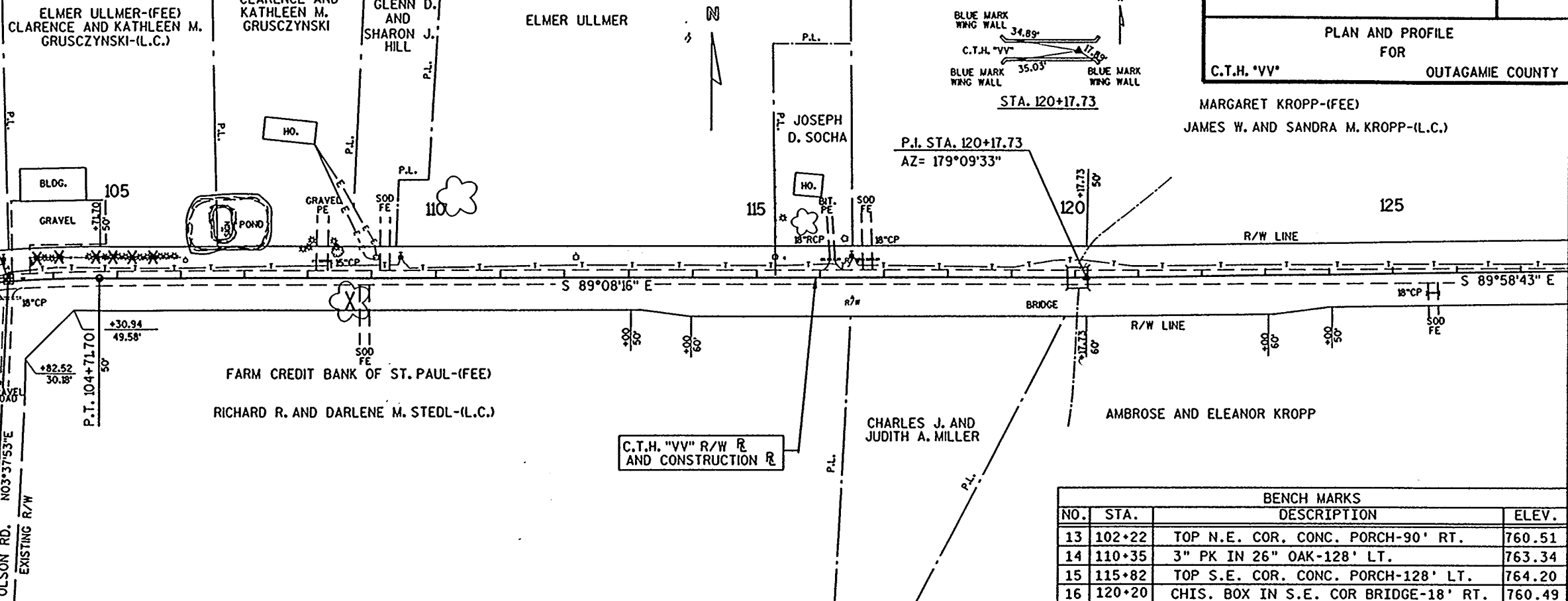


ELMER ULLMER

CURVE DATA

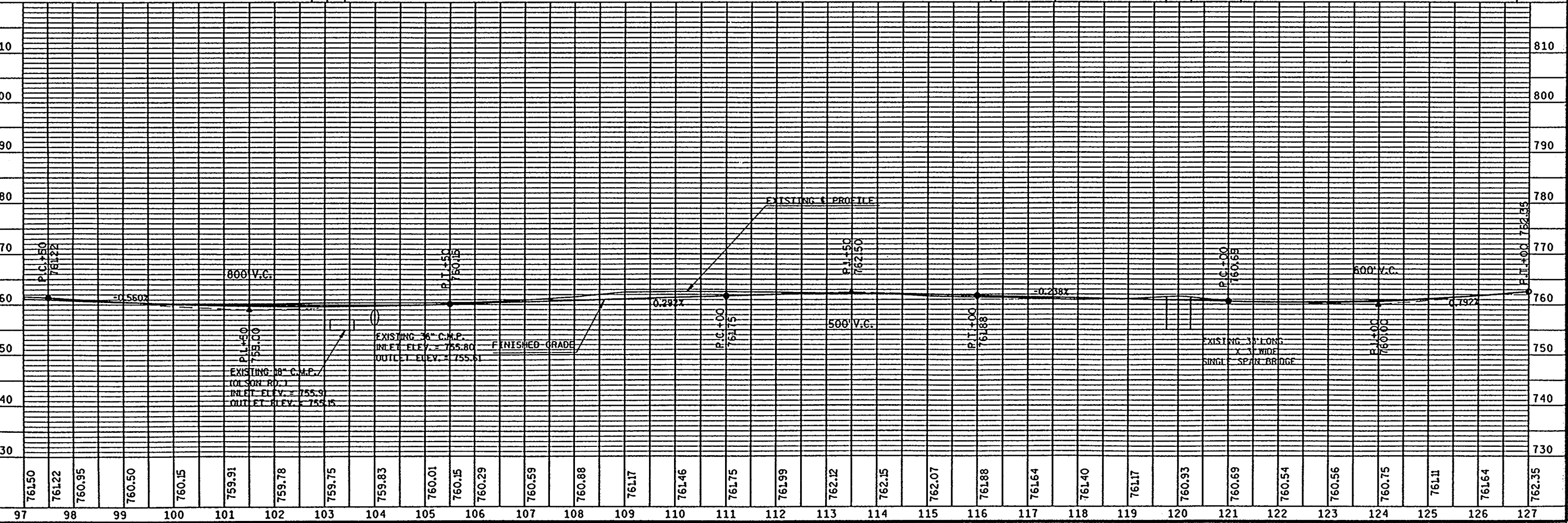
P.I. 102+75.60
 $\Delta = 11^\circ 48' 30''$
 $D = 3^\circ 00' 00''$
 $T = 197.51'$
 $L = 393.61'$
 $E = 10.19'$
 $R = 1909.86'$
 $P.C. = 100+78.09$
 $P.T. = 104+71.70$
 $S.E. = 0.056\%$
 $R.O. = 165'$

P.I. STA. 102+75.60
 P.I. STA. 103+31.85 C.T.H. "VV"
 STA. 10+00.00 OLSON ROAD



BENCH MARKS			
NO.	STA.	DESCRIPTION	ELEV.
13	102+22	TOP N.E. COR. CONC. PORCH-90' RT.	760.51
14	110+35	3" PK IN 26" OAK-128' LT.	763.34
15	115+82	TOP S.E. COR. CONC. PORCH-128' LT.	764.20
16	120+20	CHIS. BOX IN S.E. COR BRIDGE-18' RT.	760.49

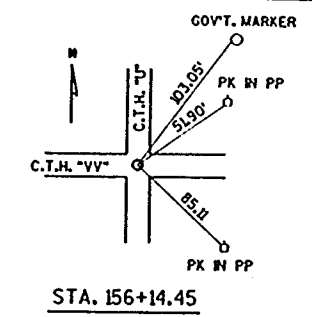
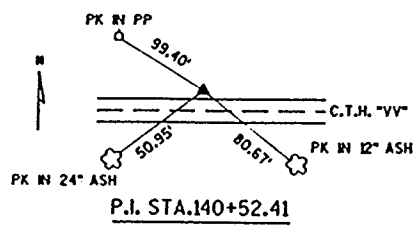
LEVELS ON * 1, 2, 3, 4, 5, 6, 7, 8, 9, 11, 12, 13, 14, 15, 16, 17, 18, 19, 20, 21, 22, 23, 24, 25, 26, 27, 28, 29, 30, 31, 32, 33, 34, 35, 36, 37, 38, 39, 40, 41, 42, 43, 44, 45, 46, 47, 48, 49, 50, 51, 52, 53, 54, 55, 56, 57, 58, 59, 60, 61, 62, 63



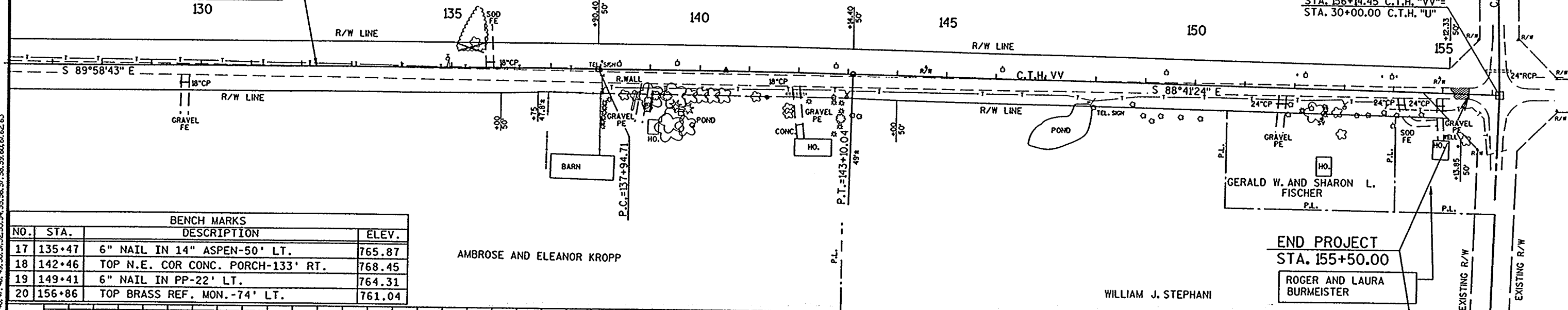
MARGARET KROPP-(FEE)
 JAMES W. AND SANDRA M. KROPP-(L.C.)

CURVE DATA

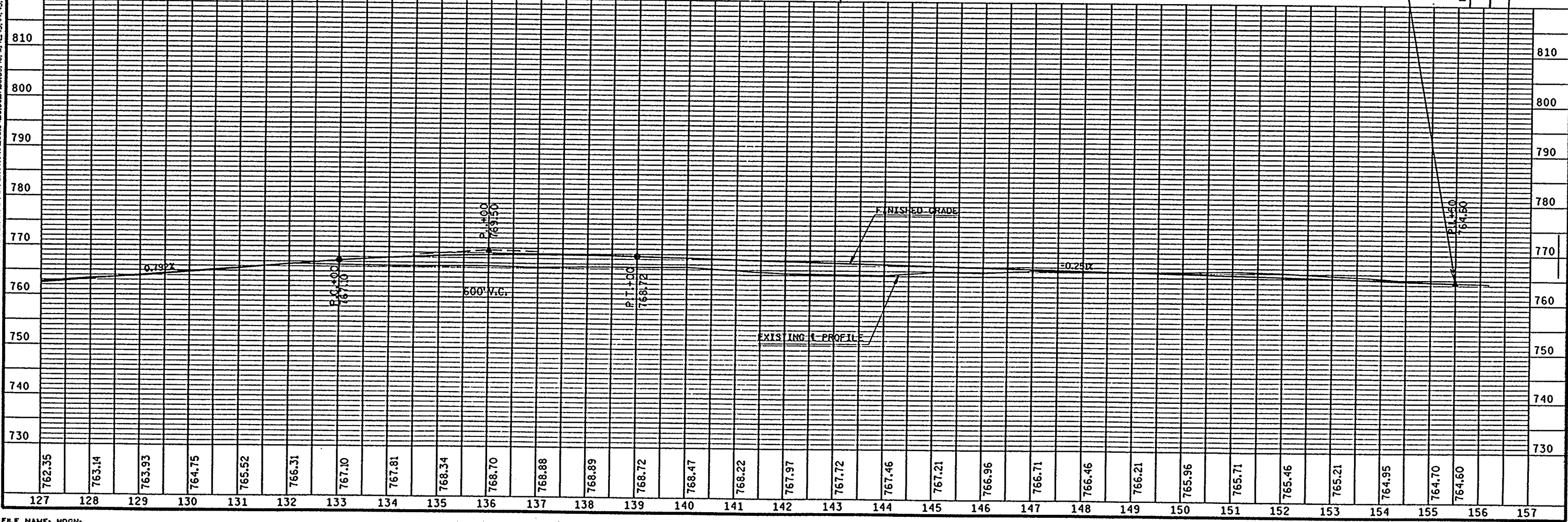
P.I. 140+52.39
 $\Delta = 1^{\circ}17'18''$
 $D = 0^{\circ}15'00''$
 $T = 257.68'$
 $L = 515.33'$
 $E = 1.45$
 $R = 22918.31$
 $P.C. = 137+94.71$
 $P.T. = 143+10.04$
 $S.E. = N.C.$



C.T.H. "VV" SURVEY & CONSTRUCTION R.
 130



BENCH MARKS			
NO.	STA.	DESCRIPTION	ELEV.
17	135+47	6" NAIL IN 14" ASPEN-50' LT.	765.87
18	142+46	TOP N.E. COR CONC. PORCH-133' RT.	768.45
19	149+41	6" NAIL IN PP-22' LT.	764.31
20	156+86	TOP BRASS REF. MON.-74' LT.	761.04



LEVELS ON - 1, 2, 3, 4, 5, 6, 7, 8, 9, 11, 12, 13, 14, 15, 16, 17, 18, 19, 20, 21, 22, 23, 24, 25, 26, 27, 28, 29, 30, 31, 32, 33, 34, 35, 36, 37, 38, 39, 40, 41, 42, 43, 44, 45, 46, 47, 48, 49, 50, 51, 52, 53, 54, 55, 56, 57, 58, 59, 60, 61, 62, 63

