

R/W FOR C.T.H. "W"

FROM TOWN HALL TO S.T.H. "76"
 WIDEN TO 5 RODS (82.5 FT.)
 JOB NO. 100-100

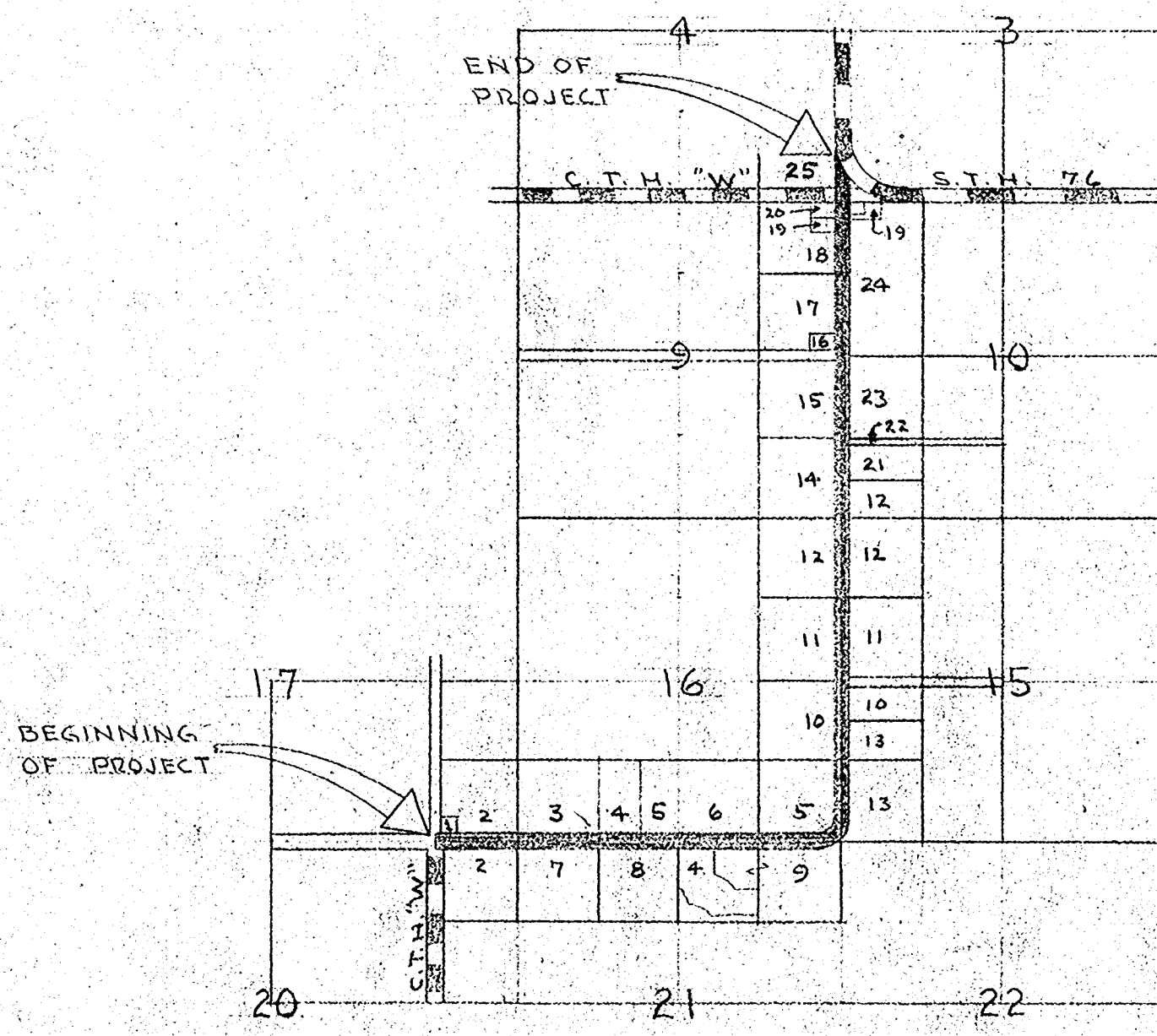
Checked 11/25/59

None

Not completed

Copy of comparison file - Check and put together

NO.	OWNER	STANDARD FENCE TO MOVE RODS	ELECTRIC FENCE TO MOVE RODS	WOVEN WIRE FENCE TO MOVE RODS	ACRES INCREASE TO BUY
1	TOWN OF MAPLE CREEK (TOWN HALL)	—	—	—	NONE
✓ 2	WALTER TEWS & WF.	—	—	—	0.488
✓ 3	EDWARD HILKER	56.4	—	21.2	0.25
✓ 4	GEORGE J. MEARTZ (OR GEORGE W.)	50	—	—	0.381
✓ 5	ALVIN HILKER & WF.	57.6	127.2	—	1.30
✓ 6	ANTHONY YOUNG	44.1	39.2	—	0.50
✓ 7	ROY HILKER & WF.	31.1	37.3	6.2	0.25
✓ 8	RICHARD HUNTLEY & WF.	39.1	—	—	0.50
✓ 9	CLARENCE BELLIN	50.1	33	—	0.688
✓ 10	EMIL SCHEEL	103.7	—	15.9	0.375
✓ 11	FRANCIS YOUNG & WF.	—	153.8	—	0.50
✓ 12	MAURICE YOUNG	40.3	161.2	—	0.625
✓ 13	JOHN YOUNG & WF.	34	—	22.2	0.37
✓ 14	CHARLES WEBER & WF.	39.4	—	—	0.25
✓ 15	ELMER PAUL	—	79	—	0.25
✓ 16	SCHOOL DISTRICT NO. 4, MAPLE CORNERS SCHOOL	—	—	—	0.031
✓ 17	CARL JANKE & WF.	—	70.4	—	0.219
✓ 18	WILLIAM BALTHAZOR, JR. & WF.	95.5	—	53.3	0.463
✓ 19	LLEWELLYN WIED & WF.	—	—	—	0.017
✓ 20	WILLARD WIED & WF.	—	—	—	0.024
✓ 21	ALFRED MATZ	37.9	—	—	0.119
✓ 22	EARL AFFELDT & WF.	—	—	—	0.006
✓ 24	ANNA PAUL	—	126.1	16.7	0.496
✓ 25	ARTHUR G. AFFELDT & WF.	—	19.7	—	0.066



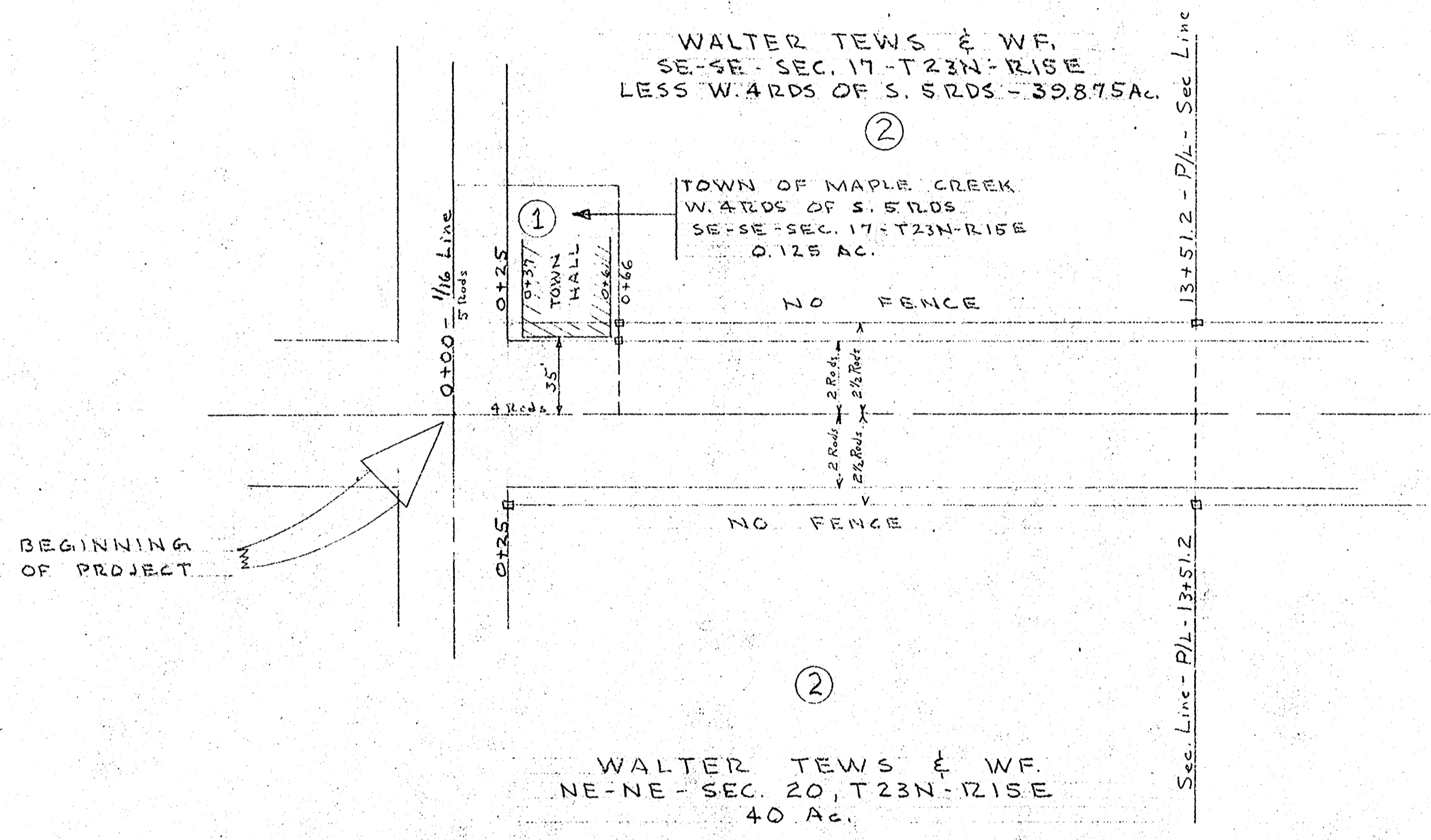
VICINITY MAP
 TOWN OF MAPLE CREEK
 T23N-R15E

County Project #99

W

FRANK M. CHARLESWORTH & ASSOCIATES
 CONSULTING ENGINEERS AND SURVEYORS
 DALLAS COUNTY SURVEYOR
 200 W. 10th Street - Dallas, Texas 75201
 ATTENTION, VARIOUS DEPT.

DRAWN BY F.M.C., JR.	DATE AUG., 1958	SHEET 10
SCALE 100'-100'		FILE



SCALE: LONGITUDINAL - 1" = 200'
TRANSVERSE - 1" = 50'

C. T. H. "W"		
FRANK M. CHARLESWORTH & ASSOCIATES CIVIL ENGINEERS AND ARCHITECTS 100-100 100-100		
DESIGNED BY F.M.C., Jr.	DATE AUG. 1958	SHEET NO. 2 of 5
DRAWN BY SOLER	SCALE 100-100	

16
T23N-R15E
TOWN OF MAPLE CREEK

21
T23N-R15E
TOWN OF MAPLE CREEK

EDW. HILKER
SW - SW
40 Ac.

GEORGE W. MEARTZ
W 1/2 - SE - SW
20 Ac.

ALVIN HILKER & WF.
E 1/2 - SE - SW
20 Ac.

ANTHONY YOUNG
SW - SE
40 Ac.

ALVIN HILKER & WF.
SE - SE
40 Ac.

ROY HILKER & WF.
NW - NW
40 Ac.

RICHARD HUNTLEY & WF.
NE - NW
40 Ac.

GEORGE J. MEARTZ
23.6 Ac. IN N 1/2 OF
NE 1/4 - 3220 443

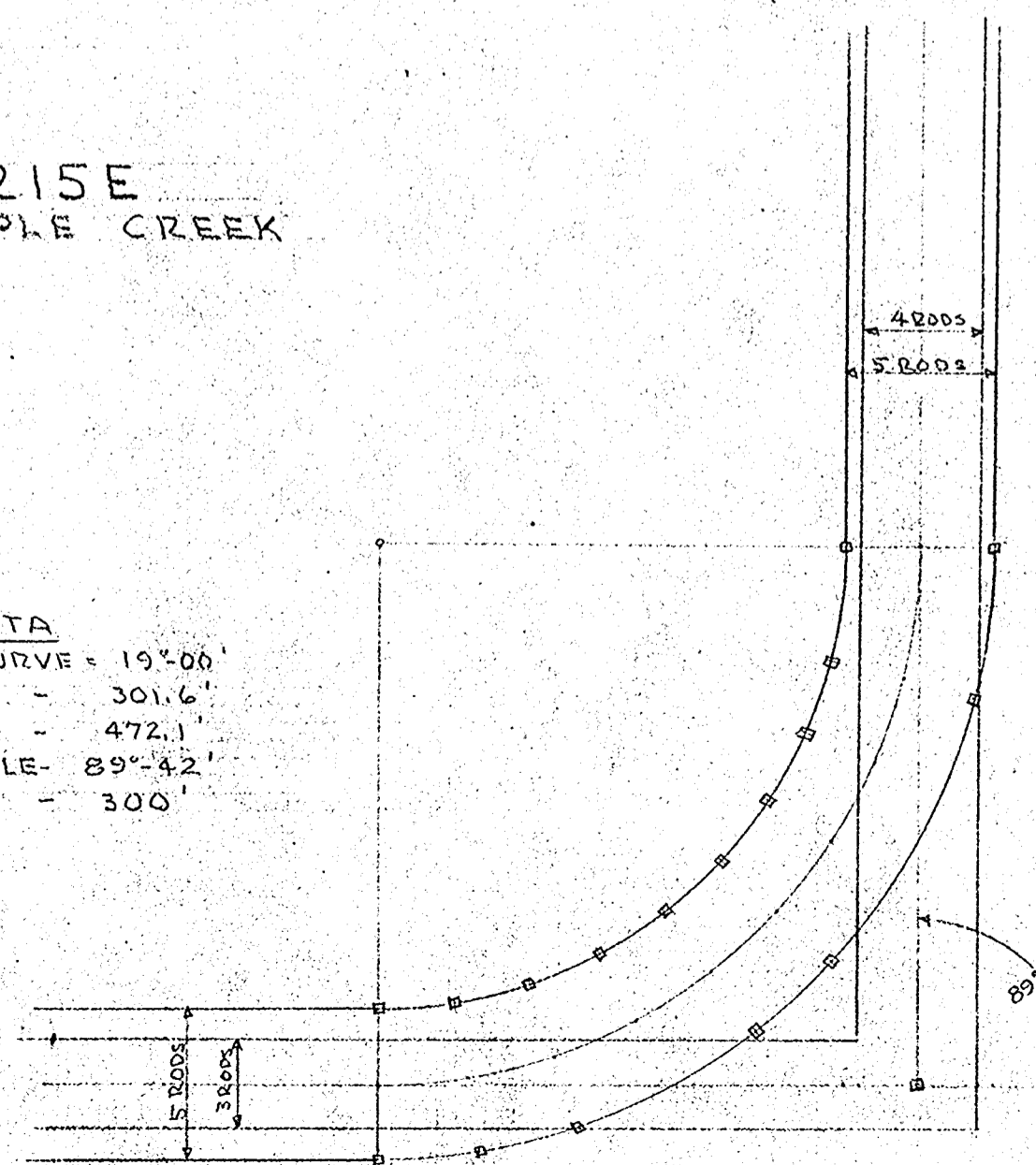
NW - NE
LESS 23.6 Ac.
16.4 Ac.

CLARENCE BELLIN
NE - NE
40 Ac.

FOR CURVE SEE
"DETAIL" - THIS SHEET

CONC. ARCH. BRIDGE B-108
24' END TO END OF ARCH
5' HIGH OPENING
18' CLEAR ROADWAY

CURVE DATA
DEGREE OF CURVE = 19°00'
RADIUS = 301.6'
LENGTH = 472.1'
INTERIOR ANGLE = 89°42'
TANGENT = 300'



DETAIL
SCALE 1" = 100'

SCALE
LONGITUDINAL - 1" = 200'
TRANSVERSE - 1" = 50'

C. T. H. "W"		
FRANK M. CHARLESWORTH & ASSOCIATES		
CONSULTING ENGINEERS AND SURVEYORS		
REGISTERED PROFESSIONAL ENGINEERS AND SURVEYORS		
STATE OF ILLINOIS		
DESIGNED BY	DATE	SHEET
F.M.C., Jr.	AUG. 1958	3 of 5
SCALE	100-100	

15

T23N R15E
TOWN OF MAPLE CREEK

TOWN ROAD

MAURICE YOUNG
NW - NW
40 Ac.

(12)

FRANCIS YOUNG & WF.
SW - NW
40 Ac.

(11)

EMIL SCHEEL
N 1/2 - NW - SW
20 Ac.

(10)

JOHN YOUNG & WF
SW - SW
40 Ac.

(13)

119+67.8 - Section Line

1330' - ELECTRIC FENCE - 80.6 RODS

106+38 - P/L - 1/16 Line

1305' - ELECTRIC FENCE - 79.1 RODS

93+33

660' - STAN. FC. - 40 RODS

79+81 - 1/16 Line

367' W.W. FC. 22.2 RODS

66+52.7 - P/L - Sec. Line

40.5' STAN. FC. 3 RODS

1330' - ELECTRIC FENCE - 80.6 RODS

(12)

MAURICE YOUNG
NE - NE
40 Ac.

FRANCIS YOUNG & WF.
SE - NE
40 Ac.

(11)

1328' - STAN. FC. - 80.5 RODS

(10)

EMIL SCHEEL
NE - SE
40 Ac.

1/16 Line - P/L 79+81

846' - ELEC. FC. - 51.3 RODS

(5)

ALVIN HILKER & WF.
SE - SE
40 Ac.

STONE ARCH BRIDGE
30' SPAN
11' HIGH OPENING
15.5' CLEAR RDWY.

BRIDGE - 8-11
24' SPAN
6' HIGH OPENING
15' CLEAR RDWY.

FOR CURVE SEE
"DETAIL" - SHEET 3 of 5

SCALE: LONGITUDINAL - 1" = 200'
TRANSVERSE - 1" = 50'

16

T23N R15E
TOWN OF MAPLE CREEK

C. T. H. "W"		
FRANK M. CHARLESWORTH & ASSOCIATES		
CONSULTING ENGINEERS		
1000 W. 10th St., Fargo, N.D.		
S.D. No. 100-100		
F.M.C., JR.	AUG. 1958	4 of 5
100-100		

10
T23N R15E
TOWN OF MAPLE CREEK

ANNA PAUL
W 1/2 - NW 1/4 - LESS 437 D 413
79.82 Ac.

WM. BALTHAZOR, JR. & WF.
NW - SW
40 Ac.

EARL AFFELDT & WF.
N 10 AC. - SW-SW
1.0 Ac.

ALFRED MATZ
S 1/2 - N 1/2 - SW-SW
19 Ac.

MAURICE YOUNG
S 1/2 - SW-SW
20 Ac.

LLEWELLYN WIED & WF.
437 D 413
0.68 Ac.

C.G.S.M.C.P.
18" D. x 28' LG.

756' ELEC. FC. - 45.8 RDS

NO FC.

W.W. FC.

W.W. FC.

W.W. FC.

W.W. FC.

W.W. FC.

W.W. FC.

W.W. FC.

W.W. FC.

W.W. FC.

W.W. FC.

W.W. FC.

W.W. FC.

W.W. FC.

W.W. FC.

W.W. FC.

W.W. FC.

W.W. FC.

W.W. FC.

W.W. FC.

W.W. FC.

W.W. FC.

W.W. FC.

W.W. FC.

1325' ELEC. FC. - 80.3 RDS

1328' STANDARD FENCE - 80.5 RDS

626' STAN. FC. - 37.9 RDS

665' STAN. FC. - 40.3 RDS

880' WOVEN WIRE FC. - 53.3 RDS.

1162' ELECTRIC FENCE - 70.4 RDS.

1303' ELECTRIC FENCE - 79 RDS

NO FENCE

650' STAN. FC. - 39.4 RDS

SCHOOL DISTRICT NO. 4
MAPLE CORNERS SCHOOL
0.5 AC. IN SE CORNER
OF SE-NE

CONC. CONVERT.
12' SPAN
6' HIGH OPENING
15' CLEAR ROADWAY

WM. BALTHAZOR, JR. & WF.
NE-NE LESS 0.385 Ac.
39.615 Ac.

CARL JANKE & WF.
SE-NE LESS 0.5 Ac. IN SE CORNER
39.5 Ac.

ELMER PAUL
NE - SE
40 Ac.

CHARLES WEBER & WF.
SE - SE
40 Ac.

END OF PROJECT

S.I.H. "76"

T23N R15E
TOWN OF MAPLE CREEK

SCALE: LONGITUDINAL - 1" = 200'
TRANSVERSE - 1" = 50'

DETAIL
SCALE: 1" = 100'

C. T. H. "W"		
FRANK M. CHARLESWORTH & ASSOCIATES		
CONVULSIONS AND PERMANENT RECORDS		
CITY AND COUNTY RECORDS		
STATE OF IOWA		
PLANNED AND CONSTRUCTED		
DESIGNED BY	DATE	SHEET NO.
F.M.C., JR.	AUG., 1958	5 of 5
SCALE	100 - 100	SCALE